



COMPUTER SOLUTIONS

► MEDF: CREATING NEW PARTNERSHIPS: MEET OUR LATEST PARTNER



► 2019 METIS BUSINESS CONFERENCE: MARCH 7TH: SPECIAL GUEST DAVID USHER

metis economic development fund



Helping Metis Business *succeed*

METIS ECONOMIC DEVELOPMENT FUND: EXPANDS THE PARTICIPATION OF THE METIS PEOPLE IN MANITOBA BY STIMULATING AND ADVANCING ECONOMIC DEVELOPMENT ACTIVITIES.



Meet MEDF's newest Partner Troy McLennan: President and Owner of Hub Computer Solutions.

When your IT systems are aligned with your business goals, that's Smarter IT. HUB Computer Solutions was first started as a part-time venture back in 1989. As the company grew over the years, it fostered a company culture of smart, caring people who share their same passion for building long lasting relationships with clients, understanding their objectives, and improving their business with high-quality, meaningful IT solutions and services.

HUB is growing, with over 100 active clients throughout Manitoba, across Canada and the United States.

We have helped hundreds of leading businesses like yours.

What we do

Services you can trust;

- Consulting, Strategy & Design
- Support Management
- Implementation and Project Management

Quality IT Solutions;

- Cyber Security
- Networking
- Systems & storage
- Communication & Collaboration
- Office 365



Stay Connected



<https://www.lrcc.mb.ca/twitter>
<https://www.medf.ca/twitter>

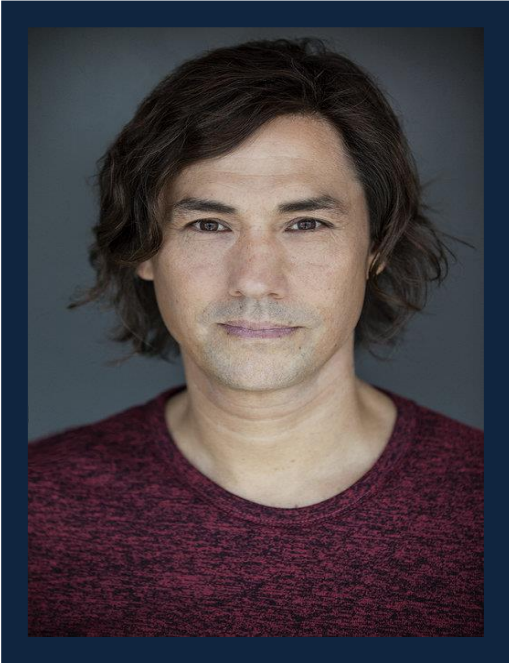


<https://www.lrcc.mb.ca/facebook>
<https://www.medf.ca/facebook>

2019 Metis Business Conference

March 7th – Fort Garry Hotel – Winnipeg, MB

Keynote Speaker: DAVID USHER
Unlock Your Creativity and Change Everything!



“In this new world where innovation runs like water, creativity is not a risk or a luxury. It is absolutely, a necessity”

When innovative companies like Google, 3M, Cisco, Pepsi, Xerox and SAP want to inspire creative thinking in their employees and executives they bring in David Usher. David doesn't just talk about creativity, innovation and artificial intelligence, he lives it. Drawing from his unique experience as a multi-platinum, 4 time Juno award winning musician, best-selling author and as the founder of the artificial intelligence creative studio *Reimagine AI*, David defines the path that companies and institutions can follow to reboot their creativity in this brave new world of disruptive change.

Using examples from inside the disruption of the music business by the digital economy to his experience at the forefront of the artificial intelligence revolution working with companies like Google Brain, David reveals why now more than ever creativity and innovation is the only way forward and your last, best competitive advantage. In his dynamic presentation, he electrifies audiences and demonstrates that creativity and creative success is a learnable skill that anyone can master. His interactive keynotes use live music, video, improvisation, technology, and humour to show audiences the steps they can take to jumpstart their creative process in their work and their lives.

Metis Business Conference

- Winnipeg 2019

Welcome from President Chartrand

Keynote Speaker: David Usher

Networking Business to Business Meetings

Round Table: Best Practices

Networking event: Concert Hall 7th Floor Ft Garry



Register today metisbusiness2019@gmail.com or contact Janet Stevenson @ 1-204-782-2436.

About LRCC

The Louis Riel Capital Corporation offers a business equity contribution to Metis entrepreneurs. LRCC supports start-ups, expansions, and merger & acquisitions.

- The Business Equity Contribution program is up to \$99,999 that a Metis entrepreneur can access.

LRCC also offers commercial financing for Metis entrepreneurs who want to start or grow their business.

- Our loans are up to \$250,000 and help support entrepreneurs in various industries and sectors.



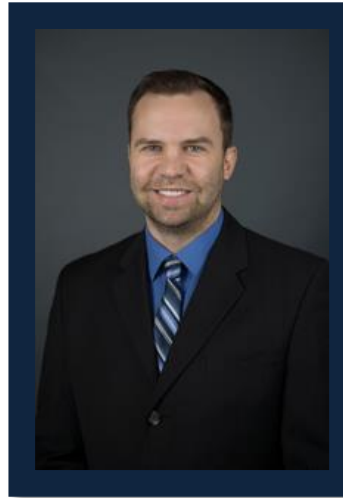
Tyler McKay

Manager, Business Equity
Contribution Program

Phone: (204) 589-0772 Ext. 272

Toll Free in MB: 1-800-387-6004

E-mail: tylerm@lrcc.mb.ca



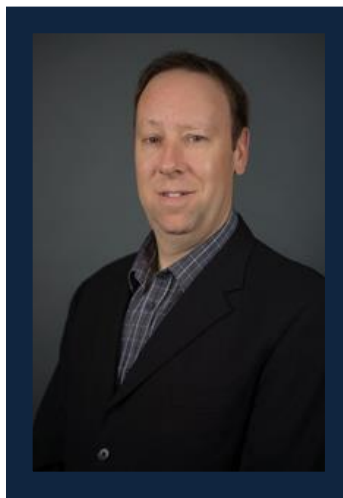
Shaun Hampton

Manager, Credit

Phone: (204) 589-0772 Ext. 212

Toll Free in MB: 1-800-387-6004

E-mail: shaunh@lrcc.mb.ca



La Belle Baguette

"My name is Alix Loiselle and I am a proud franco-manitoban metis. Being born and raised in Winnipeg, I have lived and travelled across the country to become a trained pastry chef. Having moved back to Winnipeg in 2013, I wanted to establish myself in my native community of St. Boniface and share with everyone my dream and passion of owning a bakery.

Reality hit very fast when I started calculating the costs involved in getting all the equipment put in place to make this come true. The "BUSINESS EQUITY CONTRIBUTION FUND" program from LRCC was the perfect fit for me and after being accepted into this grant program, I knew that my dream was finally going to become true.

Everyone at LRCC was extremely supportive and readily available to answer my many questions. Coordinating funds for large sums of money towards my equipment was very stressful to me, but again, the staff at LRCC really understood the process and did everything they could to make it a smooth process.

I would recommend this program to everyone qualifiable for it, in a heartbeat! My bakery has known a lot of success since we opened our doors and LRCC definitely played a major roll in this! I can now say that I am the very proud owner of La Belle Baguette, a franco-manitoban bakery in the heart of Winnipeg's French Quarter." - Alix Loiselle



Luxe Barbeque Company

"In July of 2015, we had an idea to bring a specialty BBQ retail store to Manitoba. We had great ideas, a short business plan, and a ton of ambition. We quickly realized that getting started would be an expensive and challenging venture.

With the support of LRCC and its team, we opened our doors April of 2016. The help that LRCC provided was invaluable, with a lot of debt, and in need of business upon opening, we had a huge marketing injection that helped us get our name and purpose out quickly to market. I strongly believe the start and continued success we have had would not have been possible without the help of LRCC.

I truly thank everyone that had a hand in helping us get the kick start we needed to become what we have today."

-Phil Squarie

About MEDF

Providing equity and/or debt financing for Metis entrepreneurs and businesses to support economic development initiatives



HD-Petroleum

"The Metis Economic Development Fund investment is an exciting step in the growth of HD-Petroleum as we move towards global deployment of our micro-refinery technology.

This support from MEDF has allowed us to complete the required engineering work for our project to progress into the manufacturing phase."

– Todd Habicht



Covert Logistics

"Partnering with MEDF has had many benefits. They helped us realize all our expansion plans by securing the financing needed. Their knowledge and expertise not only aided in the expansion itself but has been invaluable moving forward. With the MEDF's continued support, our business has grown and profited. They introduced us to a number of great Metis programs that will assist us in the future"

-Rob and Carloyn Rabichuk



SECURITY GLASS LTD.

Security Glass Ltd.

"Security Glass Ltd is excited to have partnered with the Metis Economic Development Fund in order to move forward with our expansion in the glazing industry. Without the support of MEDF we may have not been able to finalize all the costs we needed to purchase the equipment required to manufacture and grow. We are proudly Manitoba and Metis owned. We at Security Glass are looking forward to our relationship with the MEDF."

– Lee Sanders

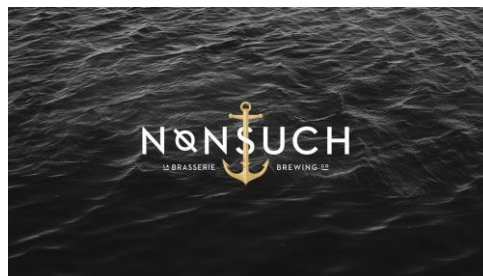
Invests in growth expansion and start ups



Voyageur Internet

"Voyageur Internet's partnership with MEDF brings key equity to the capital intensive business of building more towers connecting Manitoban homes and businesses with reliable high capacity Internet service. Our partnership with MEDF is valuable as Voyageur seeks new growth opportunities throughout Manitoba - thank you to the team at MEDF!"

– Jeff Klause



Nonsuch Brewing Co.

"Don't wait for it to be perfect because it's never going to be perfect. Contact MEDF, they are there, they will hear you out - these guys are professionals, they know what they are talking about!"

– Matthew Sabourin



Salisbury House

"MEDF was absolutely critical at our ability to making Salisbury House Manitoba owned, and also Metis owned!"

– Noel Bernier

